



# URBAN TEACHER PREPARATION AT ILLINOIS STATE UNIVERSITY: PAST, PRESENT AND FUTURE DIRECTIONS

*ROBERT LEE, COLLEGE OF EDUCATION  
GARY CREASEY, COLLEGE OF ARTS & SCIENCES  
DEBORAH CURTIS, COLLEGE OF EDUCATION*

# CAMPUS-WIDE TEACHER EDUCATION AT ILLINOIS STATE UNIVERSITY

- ◉ 41 Teacher Education programs are housed in five colleges at Illinois State University (CAS, CAST, CFA, COB, COE)
- ◉ The Council for Teacher Education
- ◉ Collaboration crosses programs and colleges
- ◉ The entire university prepares teachers and school leaders at Illinois State



# THE CHICAGO INITIATIVE AT ILLINOIS STATE UNIVERSITY

- ◉ For many years Illinois State University engaged in projects with the Chicago Public Schools (CPS)
- ◉ variety of strategies have been employed
- ◉ CPS CEOs have engaged with our efforts
- ◉ In October 2004, a partnership with Little Village was developed
- ◉ In 2005 teacher candidates began field experiences and clinical practice in Little Village schools



# THE MODEL WORKS: AWARDS & RECOGNITION

- ◎ The American Association of Colleges of Teacher Education (AACTE)
  - Best Practice Award in Support of Global Diversity and Inclusion
- ◎ John Goodlad's National Network for Educational Renewal (NNER)
  - Nick Michelli Award for Promoting Social Justice
- ◎ National Broadcasting Society (NBS)
  - Collaborative Classroom Management Video Award



# FACULTY COURSE DEVELOPMENT GRANT PROGRAM



# PROGRAM OBJECTIVES

- Redesign an existing course that serves pre-service teachers to better prepare them for the realities of urban and under-resourced settings
- Infuse new content and *provide relevant clinical experiences for students (i.e., student visits to high need Chicago schools)*



# FACULTY SUPPORT

- Provided extensive reading list
- Participates in CTLT Summer Course Redesign Workshop
- Grantees participate in a 4-day “immersion trip” in a high need Chicago neighborhood
- 2010 grantees will also receive additional training concerning Chicago Public School hot topics (e.g., Response to Intervention)



# SAMPLE SYLLABUS

- ◎ PSY 302, Adolescent Development  
(enrollment = 80% pre-service teachers)





# ASSESSMENT

- ◉ Urban Education Survey (assesses urban teaching intentions; urban education beliefs; etc.)
- ◉ Qualitative Analysis of Capstone Activities
- ◉ Pre, Post Interviews (e.g., “What comes to mind when you consider the term *underserviced school or community?*”)



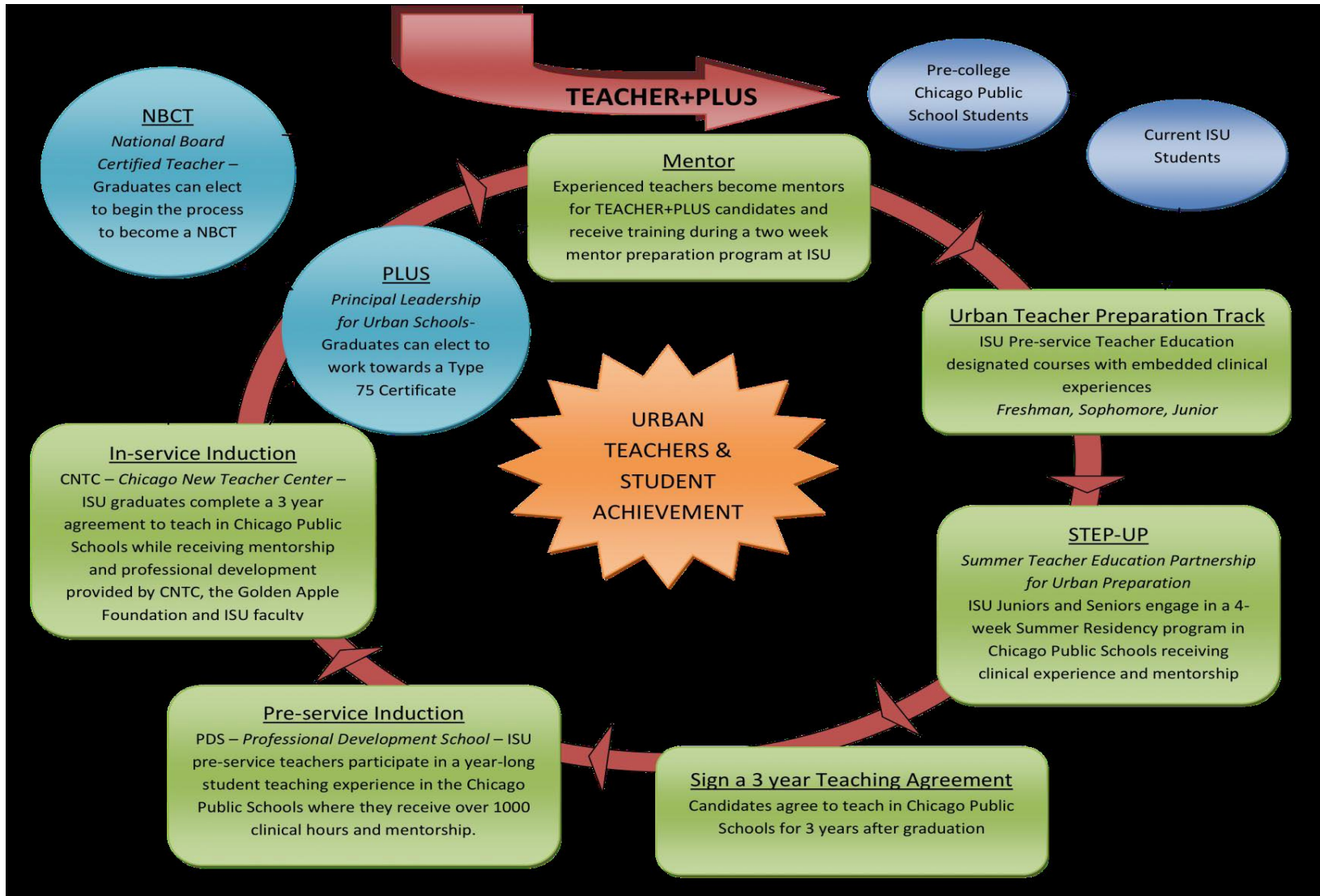
# ASSESSMENT OUTCOMES

- ⦿ Increase in urban teacher intentions, changes in social justice thinking (preliminary finding)
- ⦿ Some “barriers” to urban teaching seem to be emerging (e.g., “I wouldn’t be a good teacher because I cannot speak Spanish”)
- ⦿ Assessment data will be linked to future CPS teacher performance to gauge sustainability of student learning in these classes





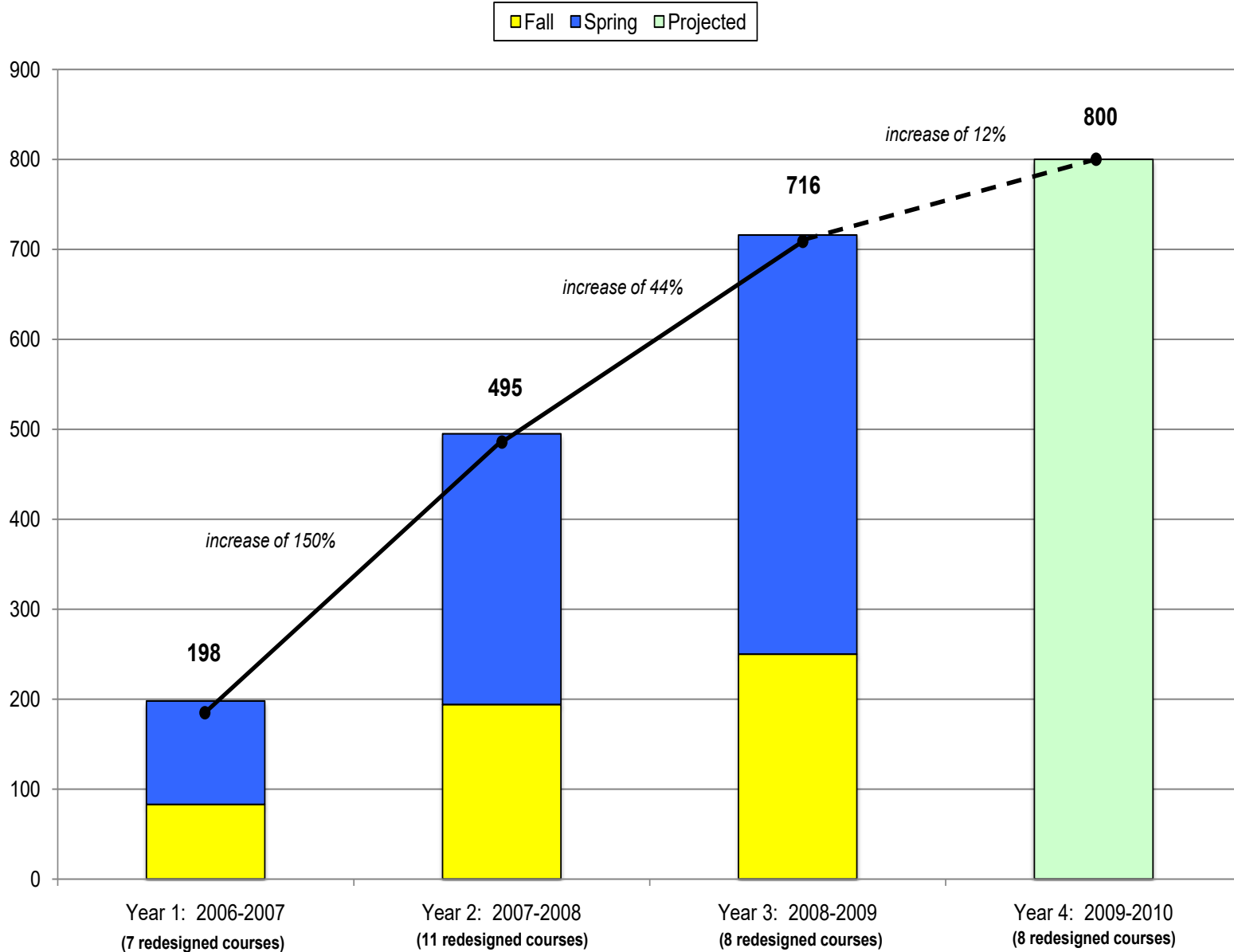
# TEACHER+PLUS Project Flowchart



**Teacher Education and Assessment Continuum for High-need Educators and Resources (TEACHER) + Principal Leadership for Urban Schools (PLUS) Project – Illinois State University**



# ISU Student Participants in Chicago Clinicals

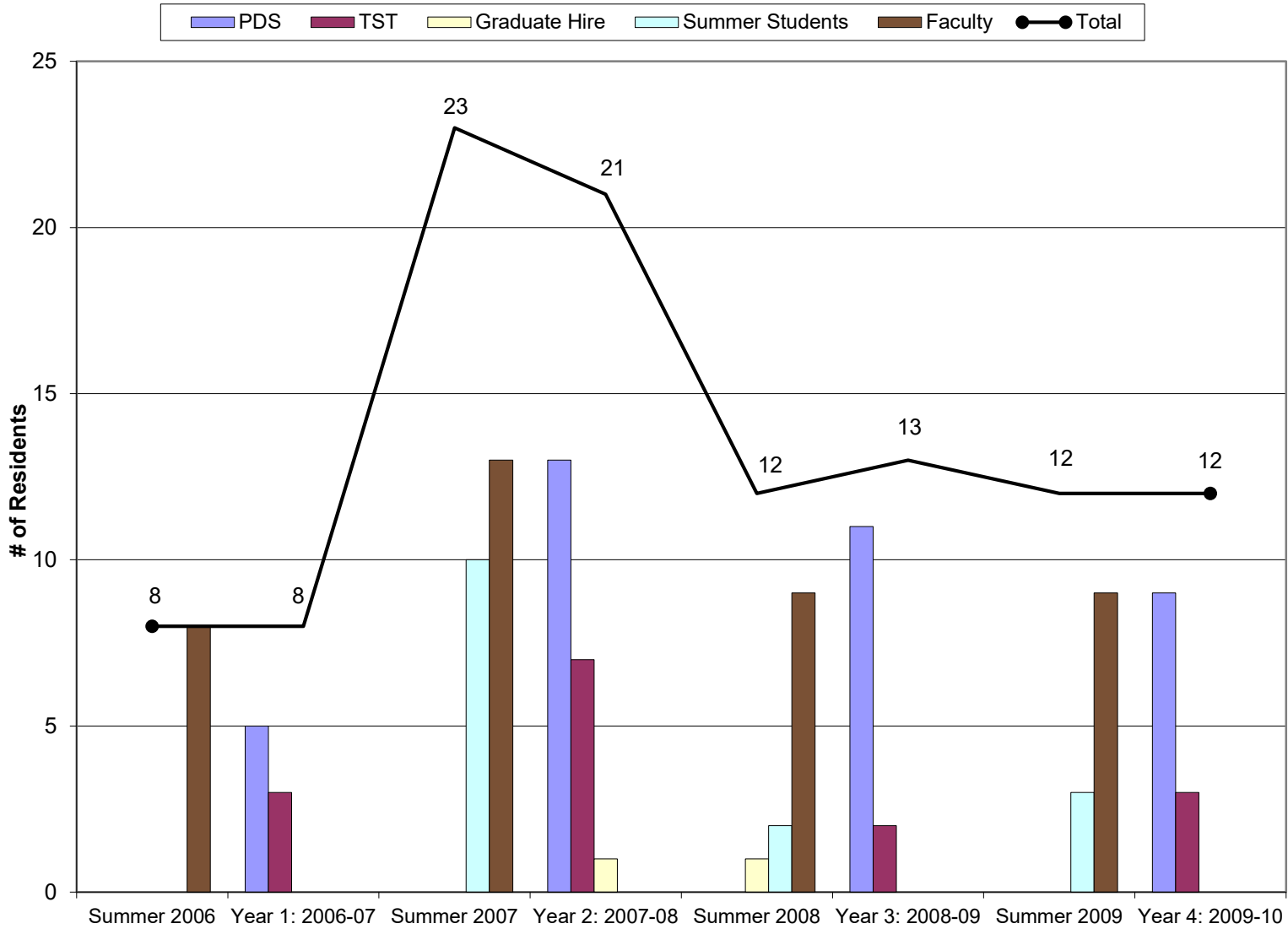


# STEP-UP

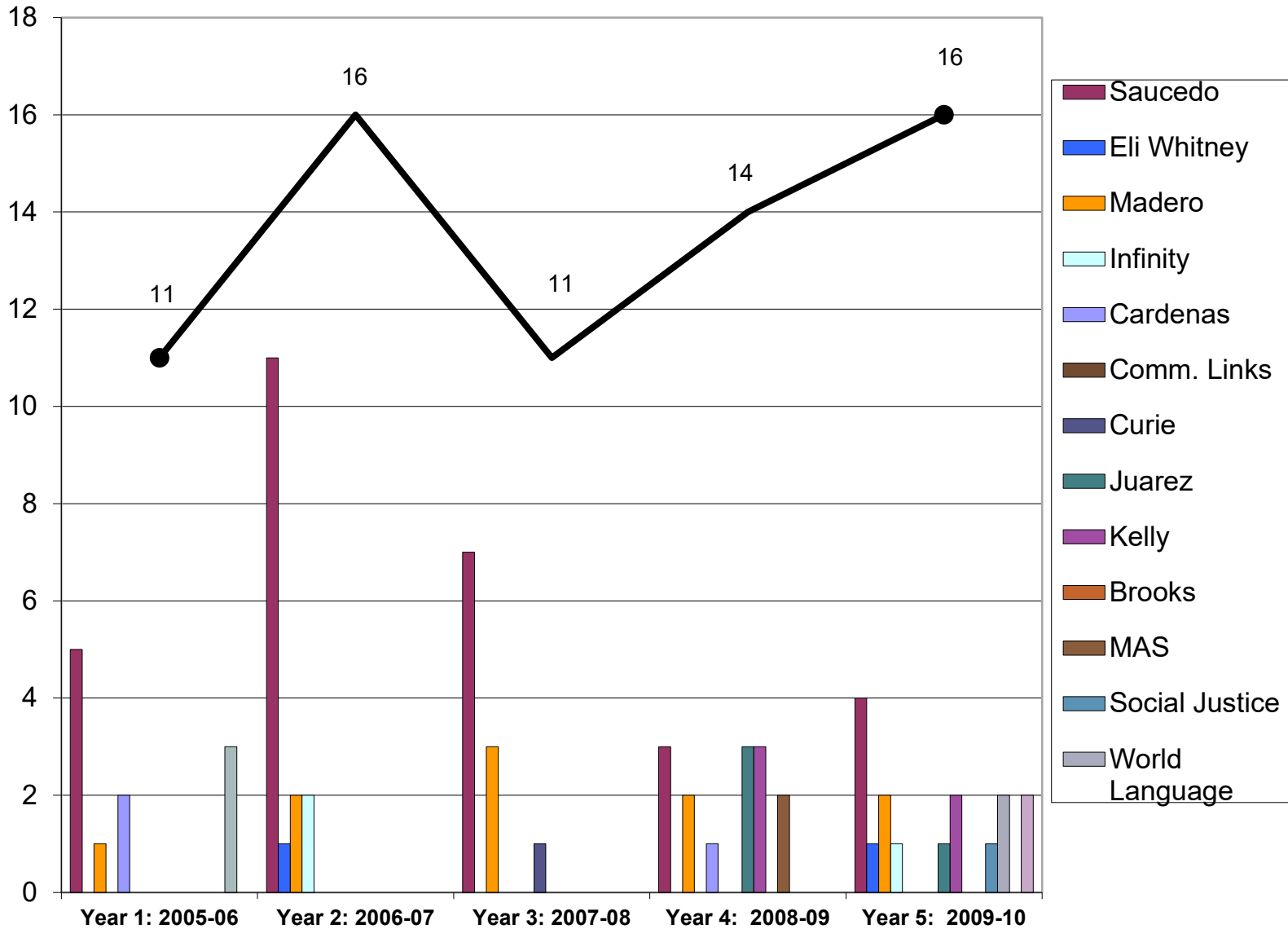
Summer Teacher Education  
Partnership  
for Urban Preparation



# Little Village Housing



## Traditional Student Teacher Placements





# PDS Intern Placements in Little Village

