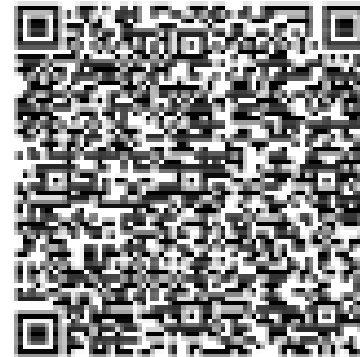


# **Reimagining General Education: Exploring Experiential and Civic Learning Pedagogies**

Dr. Katy Strzepek  
Center for Civic Engagement  
kastrze@ilstu.edu



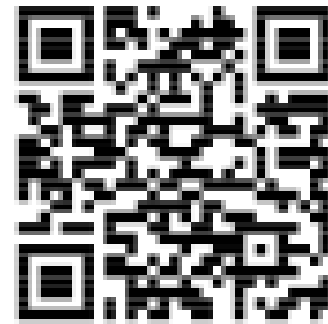
Scan for PPT link

# Goals for Today

- Connect with colleagues
- Define Civic Engagement and Experiential Learning
- Review Learning Outcomes for Gen Ed ELCE courses
- Explore best practices and examples from ISU courses that integrate technology
- Discover resources for ELCE course development



# How do you define civic engagement?



<https://www.menti.com/a1yr4obp7uav>

Civic engagement: Knowledge,  
behaviors, attitudes, and actions  
that reflect concerned, respectful,  
and active membership in a  
community

---

# Wheel of Social Change



# What is experiential learning?

Four Key Aspects (Kolb, 1984)

1. Engaging in an activity or **real-life task** through specific, concrete experiences.
2. **Reflecting** on experiences intended to support student learning and success.
3. Making **explicit connections** to theories or concepts that are important to student learning and success.
4. **Applying what was learned to new situations** through **active experimentation** and engagement.

# Learning outcomes for EL/CE classes

2.5 Collaborate in diverse teams

2.6 Transform knowledge into judgment and action.

2.7 Derive meaning from experience and information gathered through observation.

3.1 Demonstrate responsibility for contributing to a more just, equitable, and sustainable world.

3.2 Demonstrate respect for the complex identities of others, their histories, and their cultures.

3.3 Enact values and practices reflecting democratic processes.

3.4 Engage respectfully with multiple perspectives.

3.5 Justify a position based on ethics, consequence(s) of decision, or personal values.

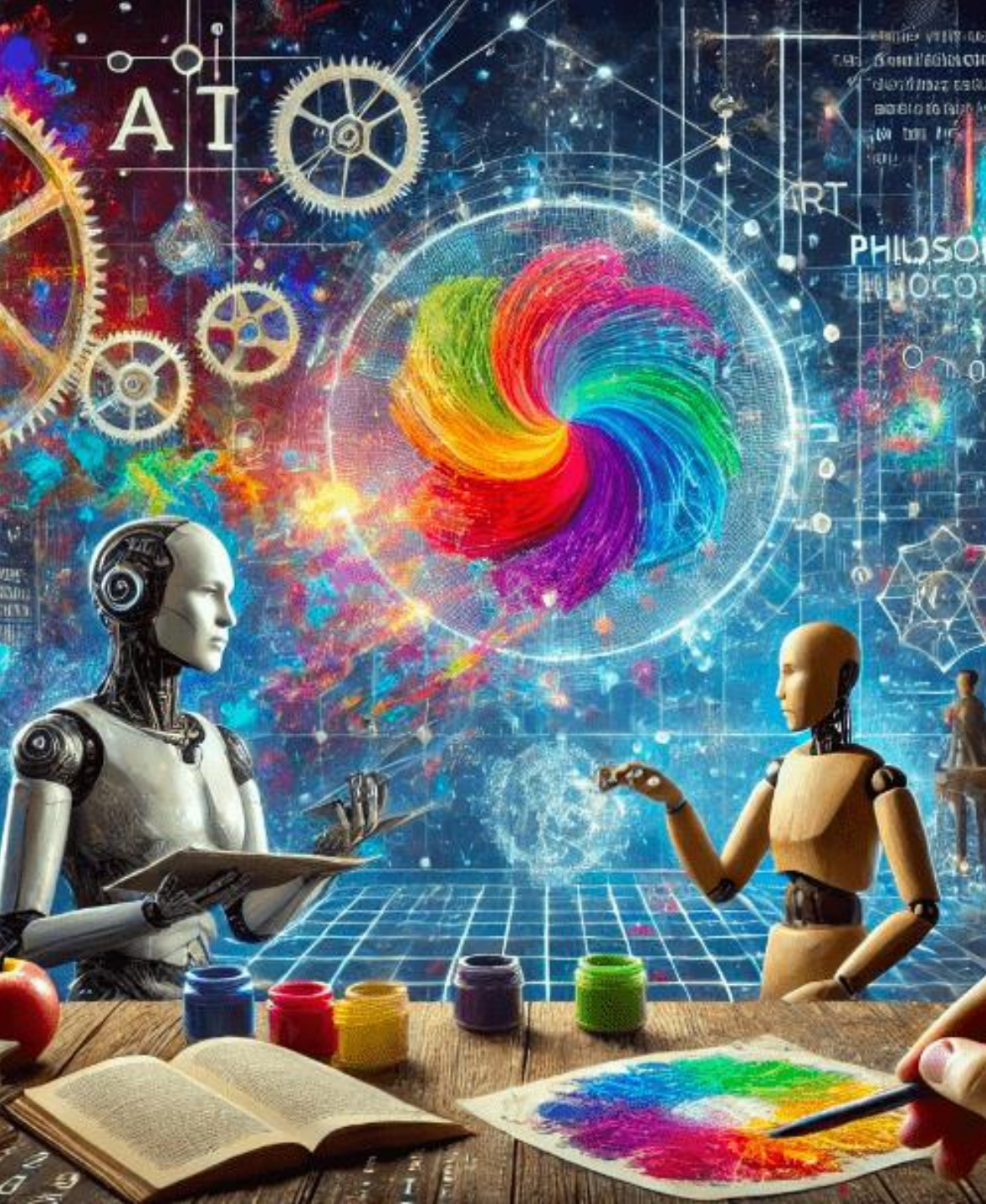
**Think, Pair, Share: Discuss assignments you use now or could edit/create that fit two of the learning outcomes.**



## Examples

- Case studies
- Policy Advocacy
- Group research
- Design thinking challenges
- CURE – course based undergraduate research
- Deliberative Dialogues
- Observing a public meeting and analyzing it
- Primary Source Analysis
- Creating Asset maps for the public
- Research Ethics training
- Conflict resolution circles training
- Voter engagement activities
- Citizen Science projects





---

## AI and Humanities

- Wisdom from the ISU AI and the Humanities Symposium
- Course example: Dr. Autumn West – ENG 145



# Archival Activism

Dr. Katie Jasper's students create Wikipedia entries – this can also be done in large classes and students can work in teams.

Archival activism is an important way to preserve and highlight minoritized voices.

---

# Opportunities to partner with other universities

## About the Democratic Erosion Consortium



The Democratic Erosion Consortium (DEC) is a nonpartisan research, teaching, and policy collaboration dedicated to addressing the threat of democratic erosion in the U.S. and around the world.

### **ABOUT US**


#### **Our Mission**

We believe in the power of research, evidence, and learning to address democratic erosion. We aim to connect academics, practitioners, policymakers, journalists, donors, and students. We strengthen connections between these diverse stakeholders to both produce and use research in order to better combat democratic backsliding across the globe.

# Community-based Research/Asset Map



## BLOOMINGTON - NORMAL COMMUNITY RESOURCE MAP



Scan the QR code to view  
more resources in the  
Bloomington-Normal area.

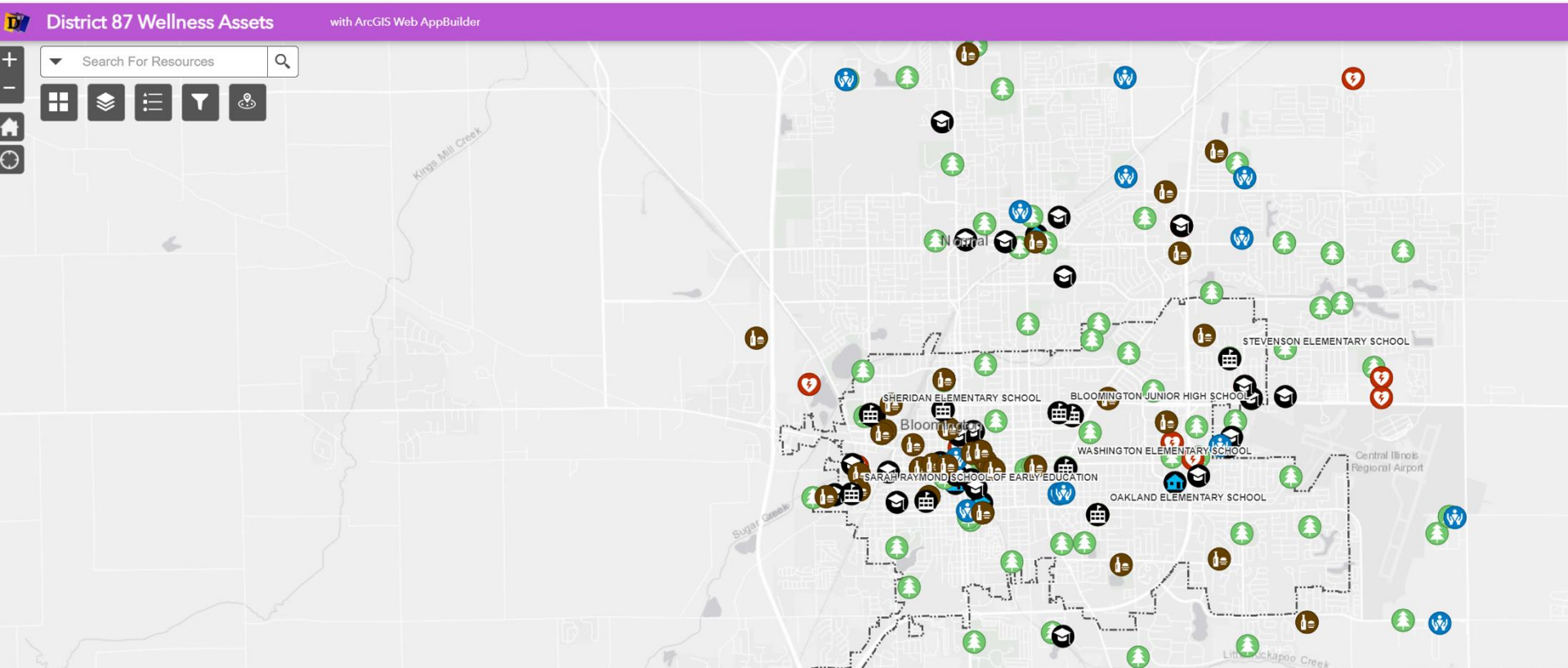
Map URL -  
<https://arcg.is/OC98bj>

This community resource was developed in partnership between the District 87 (D87) Advancing Wellness Committee and the D87 Wellness Collaborative. The D87 Wellness Collaborative is a partnership between Illinois State University (ISU) and D87. Special thank you to the Department of Geography, Geology, and the Environment for hosting the web map. Funding was made available by the Diversity, Equity, Belonging, and Inclusion grant sponsored by the ISU College of Applied Science and Technology.

Thanks to the District 87 Wellness Collaborative for creating and sharing this resource! Thanks to Dr. Jones and Dr. Kostelnick for sharing this map.



# Community-based Research/ Asset mapping with ARC GIS



# Milner Digital Humanities Lab

So many great resources to help you teach:

- [Digital Scholarship/Data visualization](#)
- [Digital Publishing](#)
- [Transcription](#)
- [Finding Data Sets](#)

Thank you to [Rebecca Fitzsimmons](#) for sharing her knowledge about Digital Scholarship resources at ISU.

# Reparative Cataloguing

- Can be a form of civic engagement and experiential learning
- Omeka is great for layering metadata and students can link items in new ways that make them findable.
- Example from our Circus Collection:  
<https://experience.arcgis.com/experience/1c97de95adfc47f3a0c486fb041c2300/>

# Resources for Creating Classes for the New Gen Ed

- [Upcoming CIPD workshops](#)
- [Milner](#)
- [Center for Civic Engagement resources](#)
- [Handbook for Experiential Learning and Civic Engagement](#)
- Please feel free to [contact CCE staff](#) for an individual consultation. We are happy to help!





# Questions

---

Thank you for  
being  
all kinds  
of amazing